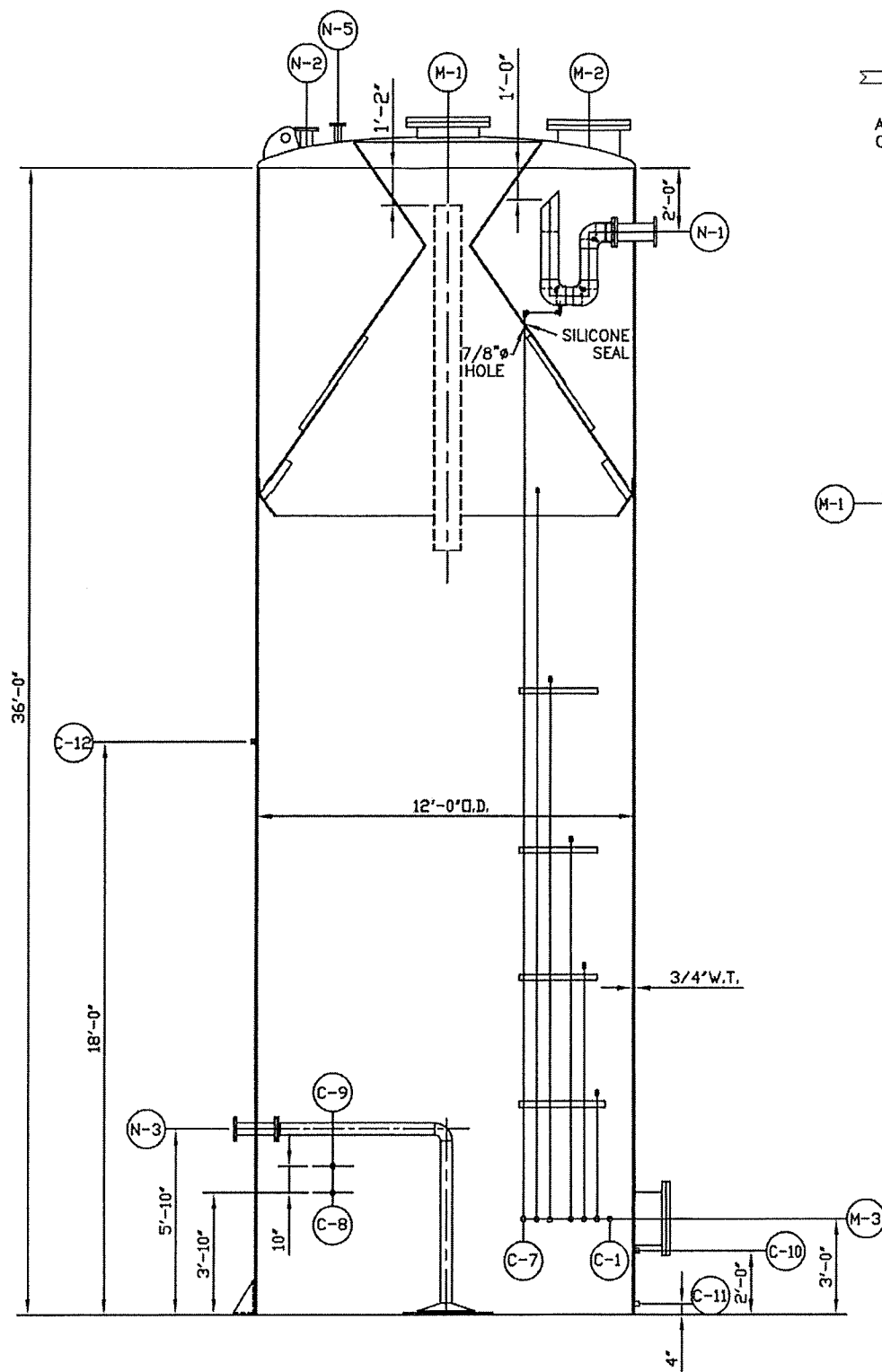
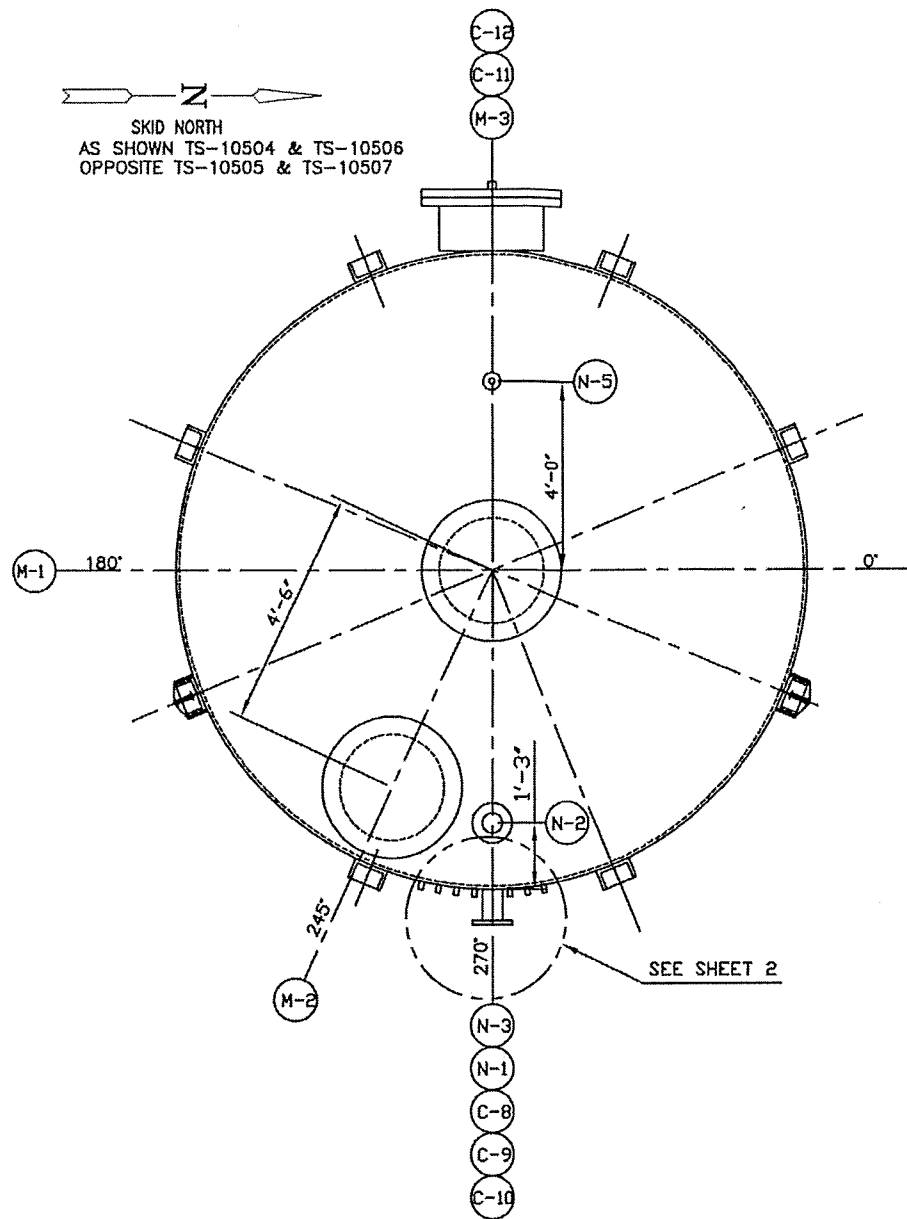


This drawing (including electronic file) is the proprietary property of ICM, Inc., and must be returned, without reproduction or modification, to ICM, Inc. at any time upon request. But in any event at completion of work or job, while in possession of the drawing, the recipient must keep confidential and require employees to keep confidential the information contained herein. It must be

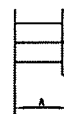


ELEVATION



ORIENTATION

- SHT.
- 1 TANK ASSY S1: TS-10504
 - 2 TANK ASSY S2: TS-10504
 - 3 TANK ASSY S3: TS-10504
 - 4 SAMPLE CONNECTION DETAILS
 - 5 CONE ASSEMBLY
 - 6 OVERFLOW
 - 7 DISTRIBUTOR PIPING
 - 8 DISTRIBUTOR ASSEMBLY



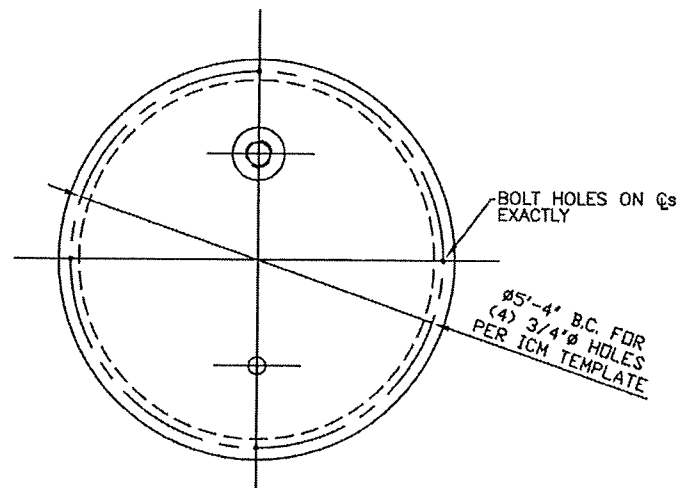
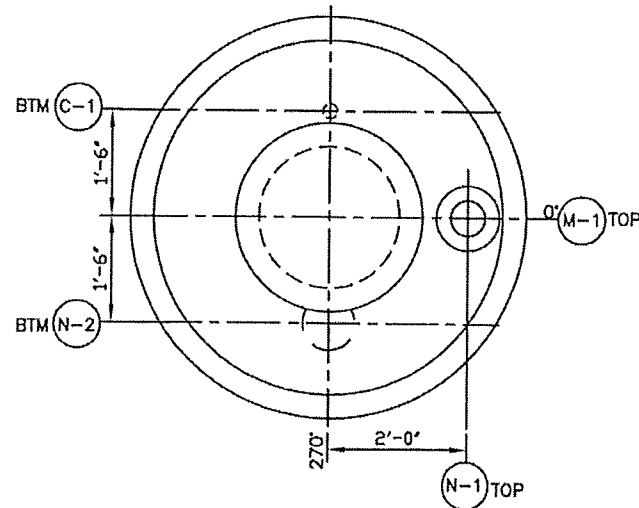
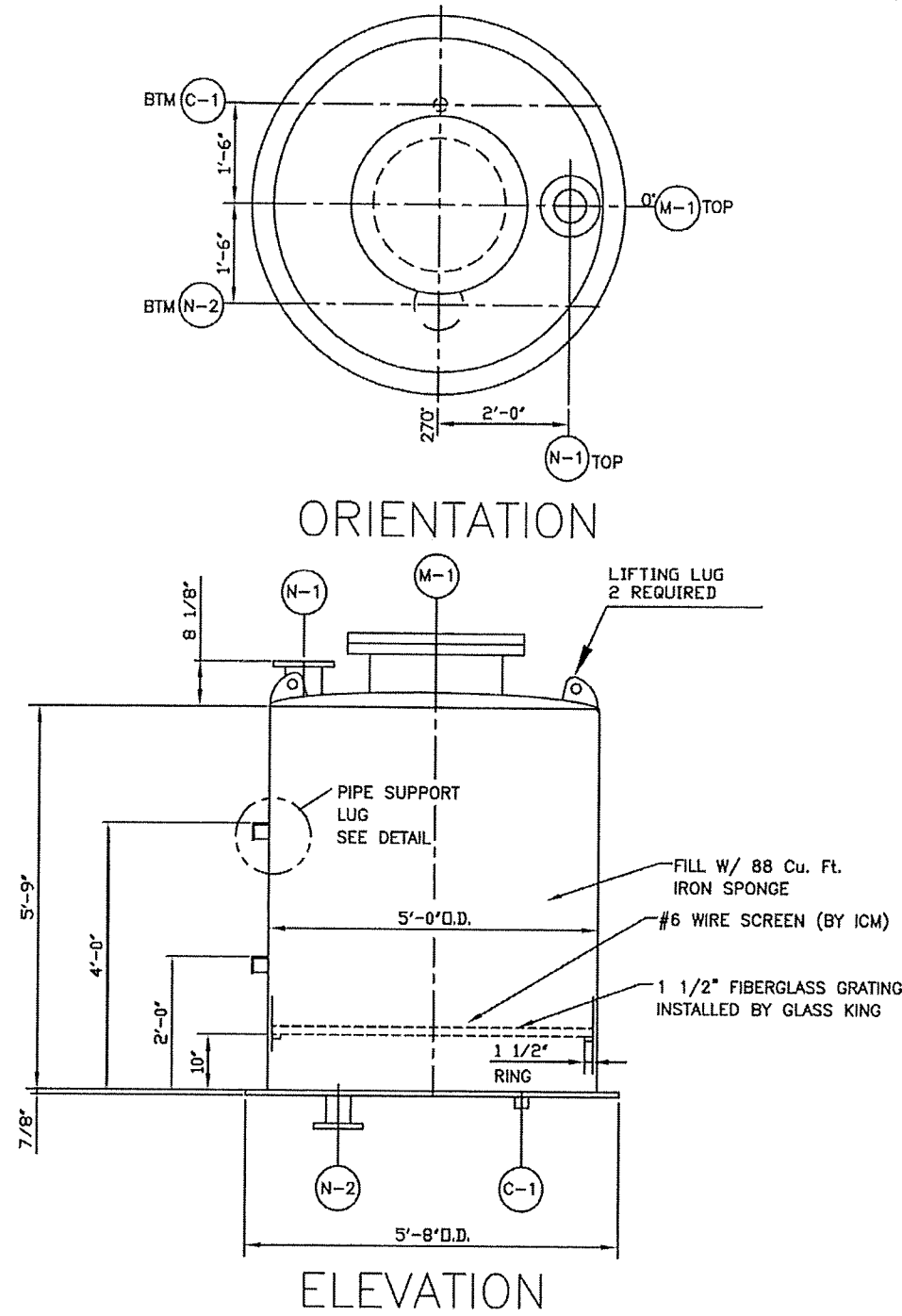
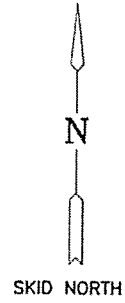
SIZE	A
1 1/2"	6"
2"	6"
3"	6"
4"	6"
6"	6"
8"	8"
10" & LARGER	8"

NOZZLE PROJECTIONS
BOLT HOLES TO STRADDLE Q.

MK No.	SIZE	RATING	DESCRIPTION
C-1			SEE SHEET 2
C-2			SEE SHEET 2
C-3			SEE SHEET 2
C-4			SEE SHEET 2
C-5			SEE SHEET 2
C-6			SEE SHEET 2
C-7			SEE SHEET 2
C-8	1 1/2"	FULL CPLG	PhE-10504
C-9	1"	FULL CPLG	TE-10504
C-10	1"	FULL CPLG	TI-10504
C-11	2"	FULL CPLG	BOTTOM DRAIN & FILL
C-12	2"	FULL CPLG	UPPER DRAIN
N-1	6' FLG.	150#	OVERFLOW
N-2	4' FLG.	150#	BIOGAS TANK VENT
N-3	4' FLG.	150#	BOTTOM INLET
N-4			
N-5	2' FLG.	150#	PRESSURE VACUUM RELIEF (PSV-10504)
M-1	24"	10#	TOP/CTR MANWAY & COVER
M-2	24"	10#	TOP/SIDE MANWAY & COVER
M-3	24"	10#	SIDE MANWAY & COVER

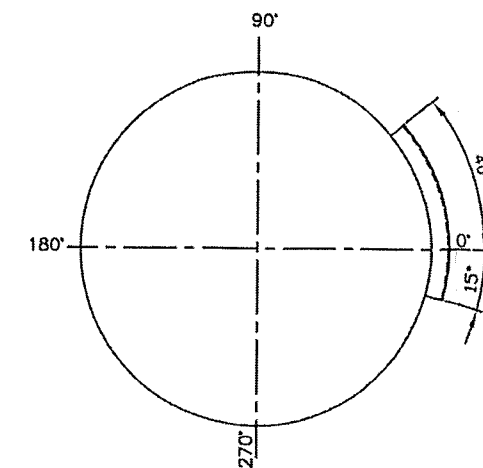
ICM Standard Parts FM412x36L Methanator System Methanator Reactor Tank Assy S1: Tag: TS-10504	LDC Grand Junction Grand Junction, IA.	ICM/PHOENIX
REV: 0 DATE: 05/05/08 DRAWN BY: V. White	LAST UPDATE (DATE): 05/05/08 ELECTRONIC FILE NAME: I-8003-1210-TS10504-1rev0	REV: 0 DATE: 05/05/08 FAX: (316) 796-0082 PHONE: (316) 796-0000
P.O. BOX 397 310 N. 1st OSWEGO, KANSAS 67030-0397		
Copyright © 2008, ICM, Inc. All rights reserved		

This drawing (1) is the property of ICM, Inc. and must be returned, without reproduction or use, at any time upon request. But in any event at completion of work or job, while in possession of the drawing, it must be properly safeguarded against revelation or disclosure to anyone except those employees who require it for the work or job. The recipient must keep confidential and require employees to keep confidential the information contained herein.

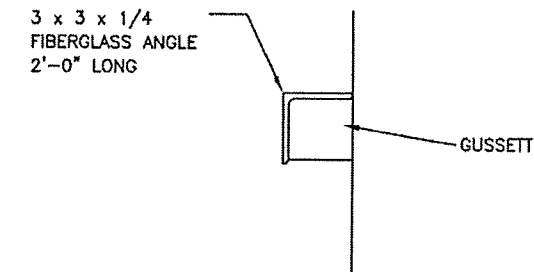


SIZE	A
1 1/2"	6"
2"	6"
3"	6"
4"	6"
6"	6"
8"	8"
10" & LARGER	8"

NOZZLE PROJECTIONS
BOLT HOLES TO STRADDLE Qs



PIPE SUPPORT LUG PLAN



PIPE SUPPORT LUG DETAIL
2 REQUIRED

88 Cu. Ft. IRON SPONGE - CONNELLY GPM
19.7 Sq. Ft. #6 WIRE SCREEN 316SS
19.7 Sq. Ft. 1 1/2" FIBERGLASS GRATING

MK No.	SIZE	RATING	DESCRIPTION
C-1	1 1/2" SCRD	1/2 CPLG	DRAIN
N-1	6" FLG.	150#	GAS INLET
N-2	4" FLG.	150#	GAS OUTLET
M-1	24" FLG.	10#	TOP MANWAY & COVER

EMPTY WEIGHT = 610#

ICM/PHOENIX		LDC Grand Junction Grand Junction, IA.		LAST UPDATE (DATE) 05/06/08		TIME 8:33		SCALE 3/4" = 1'-0"	
ICM Standard Parts FM412x36L Methanator System Biogas Scrubber Tag: TS-10601		REV. DATE		ELECTRONIC FILE NAME: I-8003-1210-TS10601rev0		REV. DATE		REV. DATE	
I-8003-1210-TS10601 SH. OF		REV. DATE		I-8003-1210-TS10601rev0		REV. DATE		REV. DATE	
DRAWN BY: O V. White		REV. DATE		I-8003-1210-TS10601rev0		REV. DATE		REV. DATE	
PHONE: (316) 796-0900		FAX: (316) 796-0992		P.O. BOX 397 310 N. 1st COLWICH, KANSAS 67030-0397		REV. DATE		REV. DATE	
Copyright © 2008, ICM, Inc. All rights reserved.		REV. DATE		REV. DATE		REV. DATE		REV. DATE	

DRAWING NUMBER		REV.		DATE		DESCRIPTION	
1-8003-1210-TS10503 SFT. OF		0		V. White		Copyright © 2008, ICM, Inc. All rights reserved	
DATE:		REV.:		DATE:		DESCRIPTION:	
05/06/08		0		V. White		Copyright © 2008, ICM, Inc. All rights reserved	
ICM Standard Parts FM412x36L Methanator System Decarbonator Tag: TS-10503				LDC Grand Junction Grand Junction, IA.			
ORDER:				ICM/P10ENIX P.O. BOX 397 310 N. 15th COLWICH, KANSAS 67030-0397 PHONE: (316) 796-0900 FAX: (316) 796-0092			
LAST UPDATE DATE: 05/06/08 TIME: 8:31				SOLE			
ELECTRICIAN FILE NAME: 1-8003-1210-TS10503rev0				3/4" = 1'-0"			